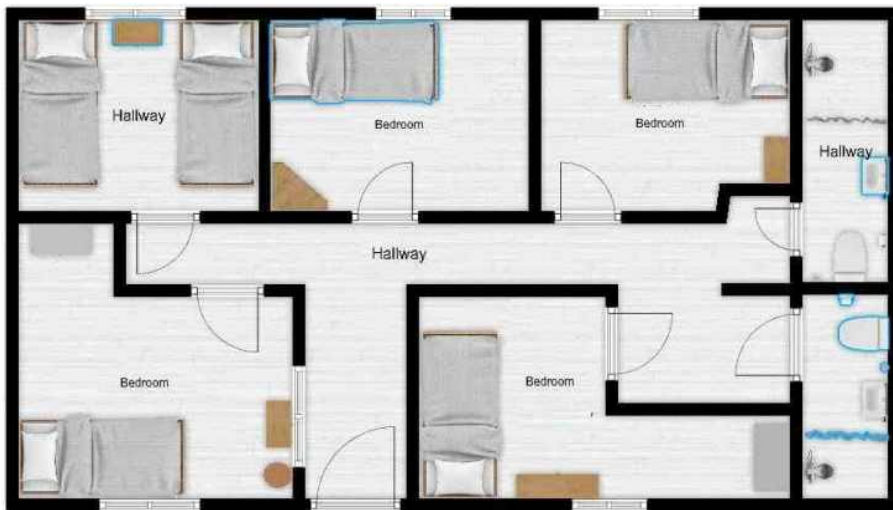




Retreat Center Accommodation Plan

(Total capacity : 65)

바르톨로메오의 집/ST. BARTHOLOMEW'S HOUSE (6beds, 5Rooms)



- 6 beds**
- 4 private rooms
- 1 shared room (2beds)
- 2 bathrooms

필립보의 집/ST. PHILIP'S HOUSE (6beds, 5Rooms)



- 6 beds**
- 4 private rooms
- 1 shared room (2beds)
- 2 bathrooms

토마스의 집 / ST. THOMAS'S HOUSE (7beds, 4Rooms)



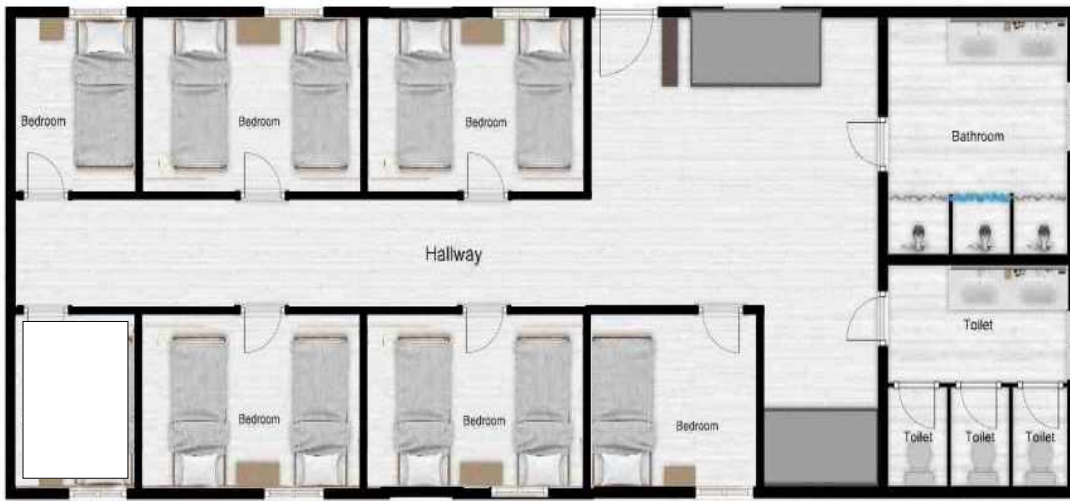
- 7 beds**
- 1 private room
- 3 shared rooms (2beds)
- 2 bathrooms
- Dining area
- Kitchen

마태오의 집 / ST. MATTHEW'S HOUSE (7beds, 3Rooms)



- 7 beds**
- 2 private room
- 1 shared rooms (5beds)
- 2 bathrooms

(차)야고보의 집/ST. JAMES THE LESSER'S HOUSE (10beds, 6Rooms)



- 10beds**
- 2 private rooms
- 4 shared room (2beds)
- 3 bathrooms
- 3 showers

타대오의 집/ST. THADDAEUS'S HOUSE (8beds, Dormitory)



- 8 beds**
- Dormitory
- 2 bathrooms
- 2 showers

요한의 집/ST. JOHN'S HOUSE (6beds, 4Rooms)



(장)야고보의 집/ST. JAMES THE GREATER'S HOUSE (6beds, 3Rooms)



안드레아의 집/ST. ANDREW'S HOUSE (2beds, 1Room, Attic space)

- 1 private room(full bed) / attic(1 full) / 1 sofa bed / Dining area / Kitchen

ANNEX(Located outside the center, 3 minutes by car)

- 3 shared rooms(2 beds each room) / 3 bathrooms / Dining area / Kitchen